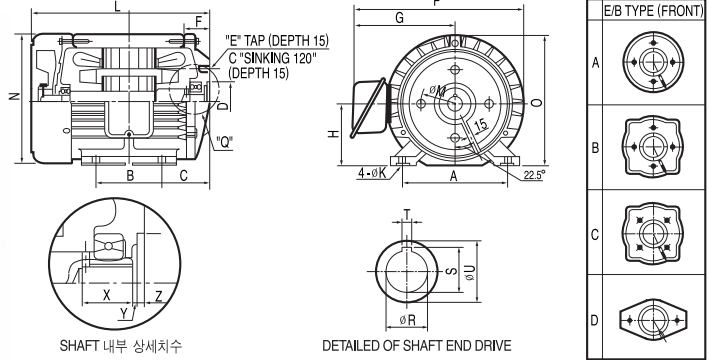


유압 UNIT 모터

HYDRAULIC UNIT MOTORS

"에너지이용 합리화법" 제 15조 등에 따른 효율관리기자재 운용규정에 기준하여 최저효율제 대상에 맞게 생산하고 있는 제품입니다.

30년 축적된 기술을 바탕으로 새로운 기술과 최신의 설비로 한국공업규격(KS)에 준하는 안전성, 신뢰성이 높은 모터를 제작하고 있으며 다양한 부하조건에 적용되는 비표준 주문 모터도 제작 공급해 드리고 있습니다.



Model	FRAME NO.	HP(kW)	DIMENSIONS(mm)									
			A	B	C	ØD	"E"	G	H	ØK	L	ØM
I01HK1DUDP	80	1(0.75)	125	100	55	50.9	4-M8	144	80	10	229	83
I01HK1DUTS	80	1(0.75)	125	100	55	82.55	4-M10	144	80	10	229	106.4
I01HK1DUD	90S	1(0.75)	140	100	60.5	70	2-M8	156	90	10	271	98
I01HK1DUS	90S	1(0.75)	140	100	60.5	82.55	2-M10	156	90	10	271	106.4
I01HK1DUP	90S	1(0.75)	140	100	60.5	82.55	2-M10	156	90	10	271	106.4
I02HK1DUP	90L	2(1.5)	140	125	60.5	95.05	4-M10	156	90	10	271	127.0
I02HK1DUS	90L	2(1.5)	140	125	60.5	82.55	4-M10	156	90	10	271	106.4
I02HK1DUK	90L	2(1.5)	140	125	60.5	82.55	2-M10	156	90	10	271	106.4
I02HK1DUDP	90L	2(1.5)	140	125	60.5	50.9	2-M8	156	90	10	271	83
I02HK1DUD	90L	2(1.5)	140	125	60.5	82.55	2-M10	156	90	10	271	106.4
I03HK6DUP	100L	3(2.2)	160	140	63	95.05	4-M10	168	100	12	293	127.0
I03HK1DUK	112S	3(2.2)	190	114	58	82.55	2-M10	187	112	12	269	106.4
I03HK1DUDP	112S	3(2.2)	190	114	58	50.9	4-M8	187	112	12	269	83
I03HK1DUT	112S	3(2.2)	190	114	58	101.6	4-M12	187	112	12	269	146
I03HK1DUS	112S	3(2.2)	190	114	58	82.55	4-M10	187	112	12	269	106.4
I05HK1DUK	112M	5(3.7)	190	140	60	82.55	2-M10	187	112	12	299	106.4
I05HK1DUT	112M	5(3.7)	190	140	60	101.6	4-M12	187	112	12	299	146.0
I05HK1DUS	112M	5(3.7)	190	140	60	82.55	4-M10	187	112	12	299	106.4
I08HK1DUS	132S	7.5(5.5)	216	140	85.5	101.6	4-M12	213	132	12	354	146.0
I08HK1DUT	132S	7.5(5.5)	216	140	85.5	127.0	2-M16	213	132	12	354	181.0
I10HK1DUS	132M	10(7.5)	216	178	86.5	101.6	4-M12	213	132	12	394	146.0

Model	DIMENSIONS(mm)						E/B(F) TYPE	SHAFT			BEARING NO.	
	N	O	P	X	Y	Z		ØR	S	T	DRIVE	OPP.DRIVE
I01HK1DUDP	165	168	231	30	1.5	7.5	A	12.7	14.3	3.2	6206ZZ	6203ZZ
I01HK1DUTS	165	168	231	30	0.5	8.5	A	15.88	17.7	4	6206ZZ	6203ZZ
I01HK1DUD	185	186	252	32	4	5	D	16.00	18.2	5	6206ZZ	6204ZZ
I01HK1DUS	185	186	252	29	2	7	D	12.7	14.3	3.2	6206ZZ	6204ZZ
I01HK1DUP	185	186	252	30	2	7	D	16	17.7	4	6206ZZ	6204ZZ
I02HK1DUP	185	186	252	30	3	6	C	19.05	21.4	4.8	6207ZZ	6204ZZ
I02HK1DUS	185	186	252	38	1.5	7.5	B	19.05	21.4	4.8	6207ZZ	6204ZZ
I02HK1DUK	185	186	252	30	2	7	D	15.88	17.7	4.0	6206ZZ	6204ZZ
I02HK1DUDP	185	186	252	29	2.5	6.5	D	12.7	14.3	3.2	6206ZZ	6204ZZ
I02HK1DUD	185	186	252	25	2	7	D	16	17.7	4	6206ZZ	6204ZZ
I03HK6DUP	211	208	276	44	0.5	12	C	19.05	21.5	4.76	6207ZZ	6205ZZ
I03HK1DUK	230	232	307	38	4.5	7.5	A	15.88	17.7	4	6207ZZ	6205ZZ
I03HK1DUDP	230	232	307	29	2.5	6.5	A	12.7	14.3	3.2	6206ZZ	6205ZZ
I03HK1DUT	230	232	307	47	1.5	10.5	A	22.23	25.5	6.35	6207ZZ	6205ZZ
I03HK1DUS	230	232	307	38	4.5	7.5	A	19.05	21.4	4.8	6207ZZ	6205ZZ
I05HK1DUK	230	232	307	38	4.5	7.5	A	15.88	17.7	4	6207ZZ	6205ZZ
I05HK1DUT	230	232	307	47	1.5	10.5	A	22.23	25.5	6.35	6207ZZ	6205ZZ
I05HK1DUS	230	232	307	38	4	7.5	A	19.05	21.4	4.8	6207ZZ	6205ZZ
I08HK1DUS	272	269	353	47	4	10	A	22.23	25.5	6.35	6207ZZ	6206ZZ
I08HK1DUT	272	269	353	45	4	10	D	31.77	35.4	7.98	6209ZZ	6206ZZ
I10HK1DUS	272	269	353	47	4	10	A	22.23	25.5	6.35	6207ZZ	6206ZZ

● 외관 및 규격은 제품상능 개선을 위해 예고없이 변경될 수 있습니다.

터미널 박스 치수표

TERMINAL BOX

철판 TYPE

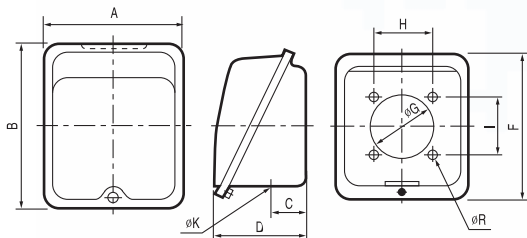


FIG.1

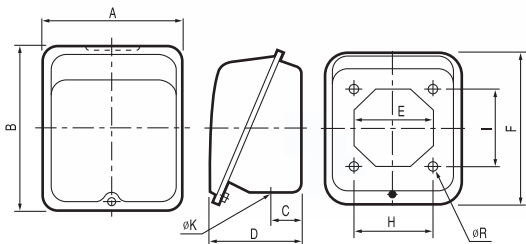


FIG.2

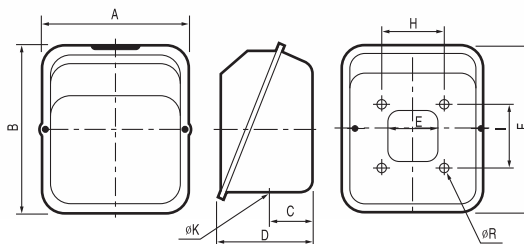


FIG.3

NO.	FRAME NO.	FIG. NO.	A	B	C	D	E	F	øG	H	I	øR	øK	t (두께)
1	71~112L	1	87	106	22	60	—	94	40	37.5	37.5	5.5	22	1.0
2	132S,M	1	128	157	29	90	—	142	40	80	80	7	42	1.2
3	160M~180L	2	163	186	53	130	90	158	—	80	80	7	45	1.2
4	200L~250M	3	229	267	67	175	80	235	—	100	100	10	80	1.2

● 외관 및 규격은 제품성능 개선을 위해 예고없이 변경될 수 있습니다.

주물 TYPE

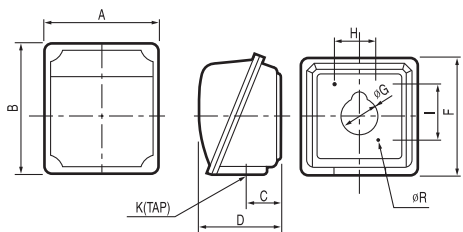


FIG.1

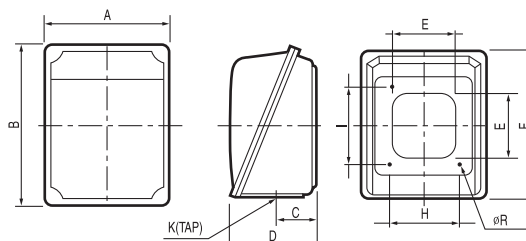


FIG.2

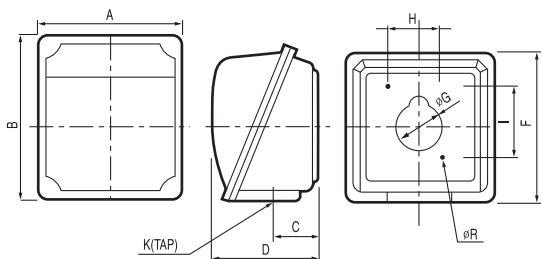


FIG.3

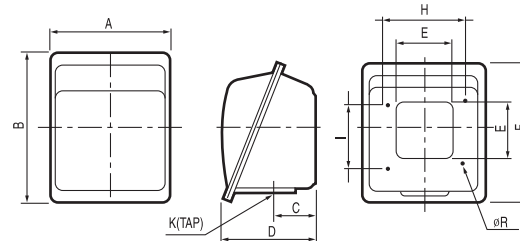


FIG.4

NO.	FRAME NO.	FIG. NO.	A	B	C	D	E	F	øG	K	H	I	øR
1	71~112	1	109	122	35	78	—	111	ø35	PFORNPT 3/4-1 1/4	37.5 OR 60	37.5 OR 60	5.5
2	132~180	2	156	164	42	95	70	158	—	PFORNPT 3/4-2	80	80	8.0
3	132~180	1	200	210	51	125	—	210	ø60	PFORNPT 3/4-2	80	80	8.0
4	200~250	3	256	243	80	152.5	—	225	ø110	PFORNPT 2-3	100	100	10.0
5	280	4	300	368	108	206	130	357	—	PFORNPT 2 1/2-3	100	140	10.0

● 외관 및 규격은 제품성능 개선을 위해 예고없이 변경될 수 있습니다.

● 주물터미널 박스 하단부는 CABLE GLAND 2개 부착가능구조입니다.

● FRAME NO. 71~160은 Aluminium Type가능